

JVC

SCHEMATIC DIAGRAMS

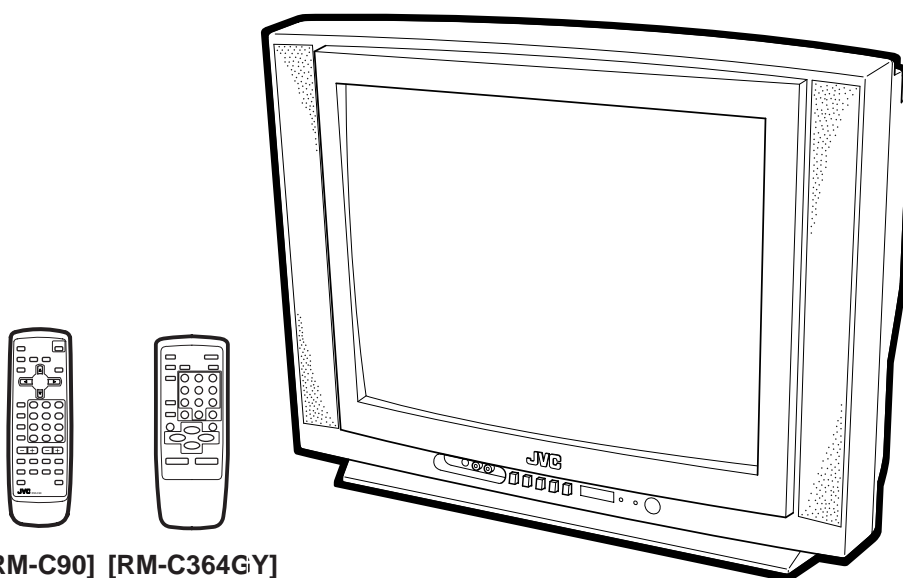
COLOUR TELEVISION

BASIC CHASSIS

CG

AV-21LMT3 / AV-21LTR3 AV-21LT3 / AV-21LT3/AU AV-21LMG3 / AV-21LMG3/-A AV-2105EE

CD-ROM No.SML200207



[RM-C90] [RM-C364GY]

CONTENTS

■ NOTE ON USING CIRCUIT DIAGRAMS	2-1
■ SEMICONDUCTOR SHAPES	2-2
■ BLOCK DIAGRAM	2-3
■ CIRCUIT DIAGRAMS	2-7
■ PATTERN DIAGRAMS	2-15

CONTENTS

SEMICONDUCTOR SHAPES	2-2
BLOCK DIAGRAM	2-3
CIRCUIT DIAGRAMS	
MAIN PWB CIRCUIT DIAGRAM	2-7
PATTERN DIAGRAMS	
MAIN PWB PATTERN	2-15
CRT SOCKET PWB PATTERN	2-17

SEMICONDUCTOR SHAPES

TRANSISTOR

BOTTOM VIEW	FRONT VIEW				TOP VIEW
					CHIP TR

IC

BOTTOM VIEW	FRONT VIEW			TOP VIEW

CHIP IC

TOP VIEW	

AV-21LMT3, AV-21LTR3 AV-21LT3, AV-21LT3/AU AV-21LMG3, AV-21LMG3/-A, AV-2105EE STANDARD CIRCUIT DIAGRAM

NOTE ON USING CIRCUIT DIAGRAMS

1.SAFETY

The components identified by the symbol and shading are critical for safety. For continued safety replace safety critical components only with manufactures recommended parts.

2.SPECIFIED VOLTAGE AND WAVEFORM VALUES

The voltage and waveform values have been measured under the following conditions.

(1)Input signal	: Colour bar signal
(2)Setting positions of each knob/button and variable resistor	: Original setting position when shipped
(3)Internal resistance of tester	:DC 20kΩ/V
(4)Oscilloscope sweeping time	:H ⇒ 20μS/div :V ⇒ 5mS/div :Others ⇒ Sweeping time is specified
(5)Voltage values	:All DC voltage values

* Since the voltage values of signal circuit vary to some extent according to adjustments, use them as reference values.

3.INDICATION OF PARTS SYMBOL [EXAMPLE]

● In the PW board	:R1209 → R209
-------------------	---------------

4.INDICATIONS ON THE CIRCUIT DIAGRAM

(1)Resistors

● Resistance value

No unit	: [Ω]
K	: [K Ω]
M	: [M Ω]

● Rated allowable power

No indication	: 1/ 16 [W]
Others	: As specified

● Type

No indication	: Carbon resistor
OMR	: Oxide metal film resistor
MFR	: Metal film resistor
MPR	: Metal plate resistor
UNFR	: Uninflammable resistor
FR	: Fusible resistor

* Composition resistor 1/2 [W] is specified as 1/2S or Comp.

(2)Capacitors

● Capacitance value

1 or higher	: [pF]
less than 1	: [μF]

● Withstand voltage

No indication	: DC50[V]
Others	: DC withstand voltage [V]
AC indicated	: AC withstand voltage [V]

* Electrolytic Capacitors

47/50[Example]:Capacitance value [μF]/withstand voltage[V]

● Type

No indication	: Ceramic capacitor
MM	: Metalized mylar capacitor
PP	: Polypropylene capacitor
MPP	: Metalized polypropylene capacitor
MF	: Metalized film capacitor
TF	: Thin film capacitor
BP	: Bipolar electrolytic capacitor
TAN	: Tantalum capacitor

(3)Coils

No unit	: [μH]
Others	: As specified

(4)Power Supply

	: B1		: B2 (12V)
	: 9V		: 5V

* Respective voltage values are indicated

(5)Test point

	: Test point		: Only test point display
--	--------------	--	---------------------------

(6)Connecting method

	: Connector		: Wrapping or soldering
			: Receptacle

(7)Ground symbol

	: LIVE side ground
	: ISOLATED(NEUTRAL) side ground
	: EARTH ground
	: DIGITAL ground

5.NOTE FOR REPAIRING SERVICE

This model's power circuit is partly different in the GND. The difference of the GND is shown by the LIVE : () side GND and the ISOLATED(NEUTRAL) : () side GND. Therefore, care must be taken for the following points.

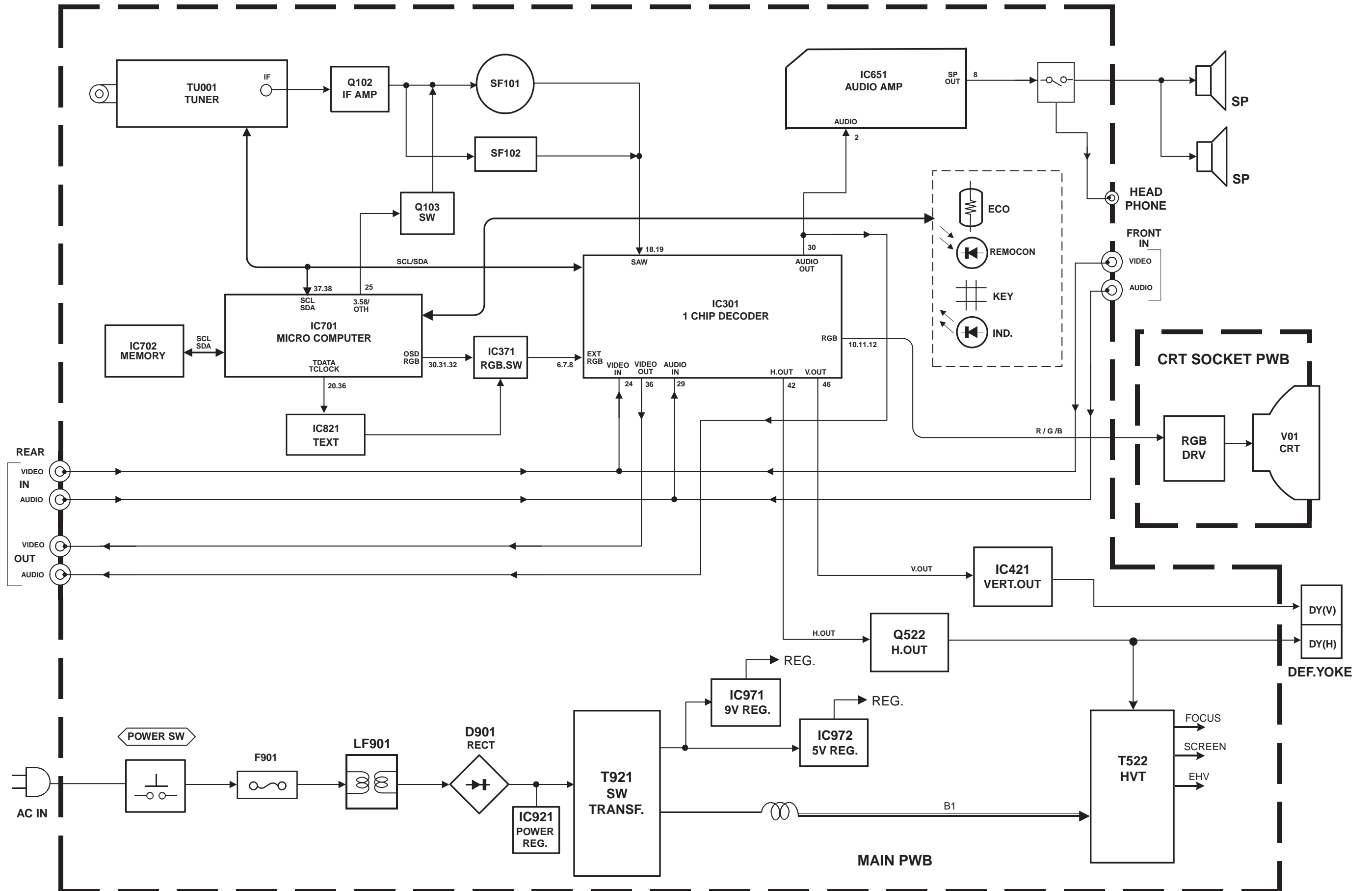
- (1)Do not touch the LIVE side GND or the LIVE side GND and the ISOLATED(NEUTRAL) side GND simultaneously. If the above caution is not respected, an electric shock may be caused. Therefore, make sure that the power cord is surely removed from the receptacle when, for example, the chassis is pulled out.
- (2)Do not short between the LIVE side GND and ISOLATED(NEUTRAL) side GND or never measure with a measuring apparatus measure with a measuring apparatus (oscilloscope, etc.) the LIVE side GND and ISOLATED(NEUTRAL) side GND at the same time. If the above precaution is not respected , a fuse or any parts will be broken.

◇ Since the circuit diagram is a standard one, the circuit and circuit constants may be subject to change for improvement without any notice.

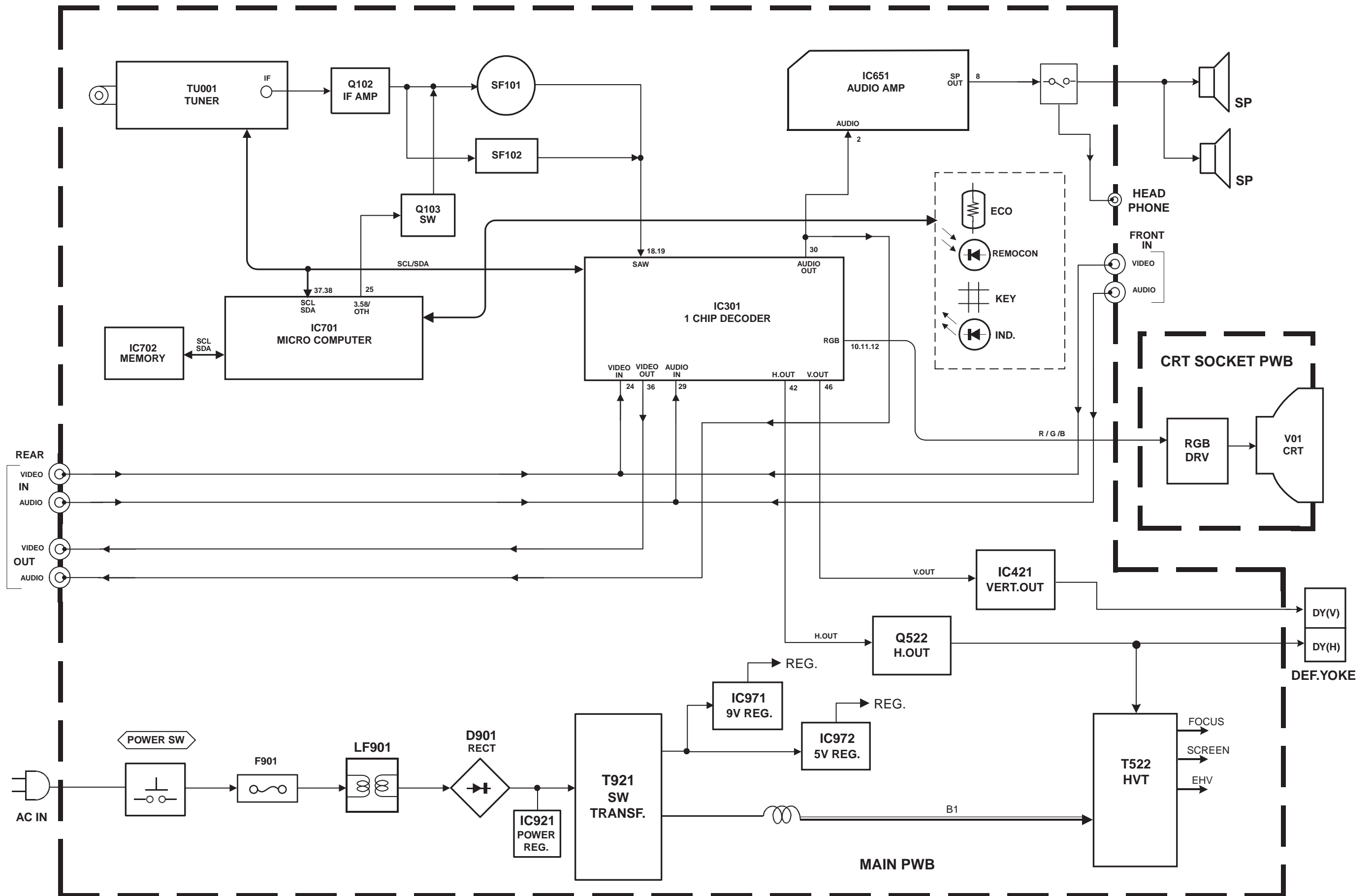
NOTE

◇ Due improvement in performance, some part numbers show in the circuit diagram may not agree with those indicated in the part list.
When ordering parts, please use the numbers that appear in the Parts List.

BLOCK DIAGRAM [AV-21LMT3, AV-21LTR3]



BLOCK DIAGRAM [AV-21LT3, AV-21LT3/AU, AV-21LMG3, AV-21LMG3/-A, AV-2105EE]



CIRCUIT DIAGRAMS MAIN PWB CIRCUIT DIAGRAMS (1/2) [AV-21LMT3, AV-21LTR3]

MAIN PWB (1/2)

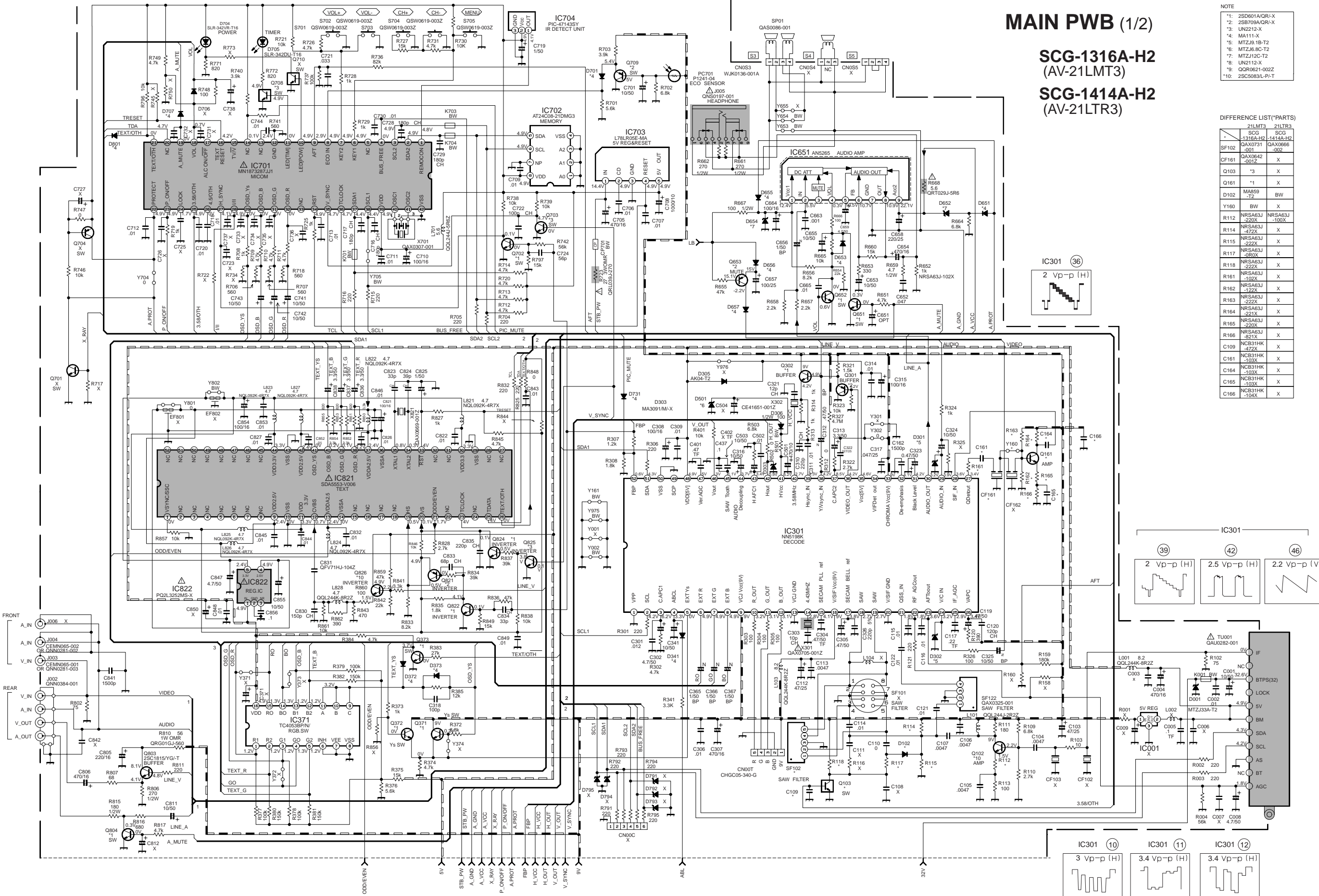
SCG-1316A-H2
(AV-21LMT3)

SCG-1414A-H2
(AV-21LTR3)

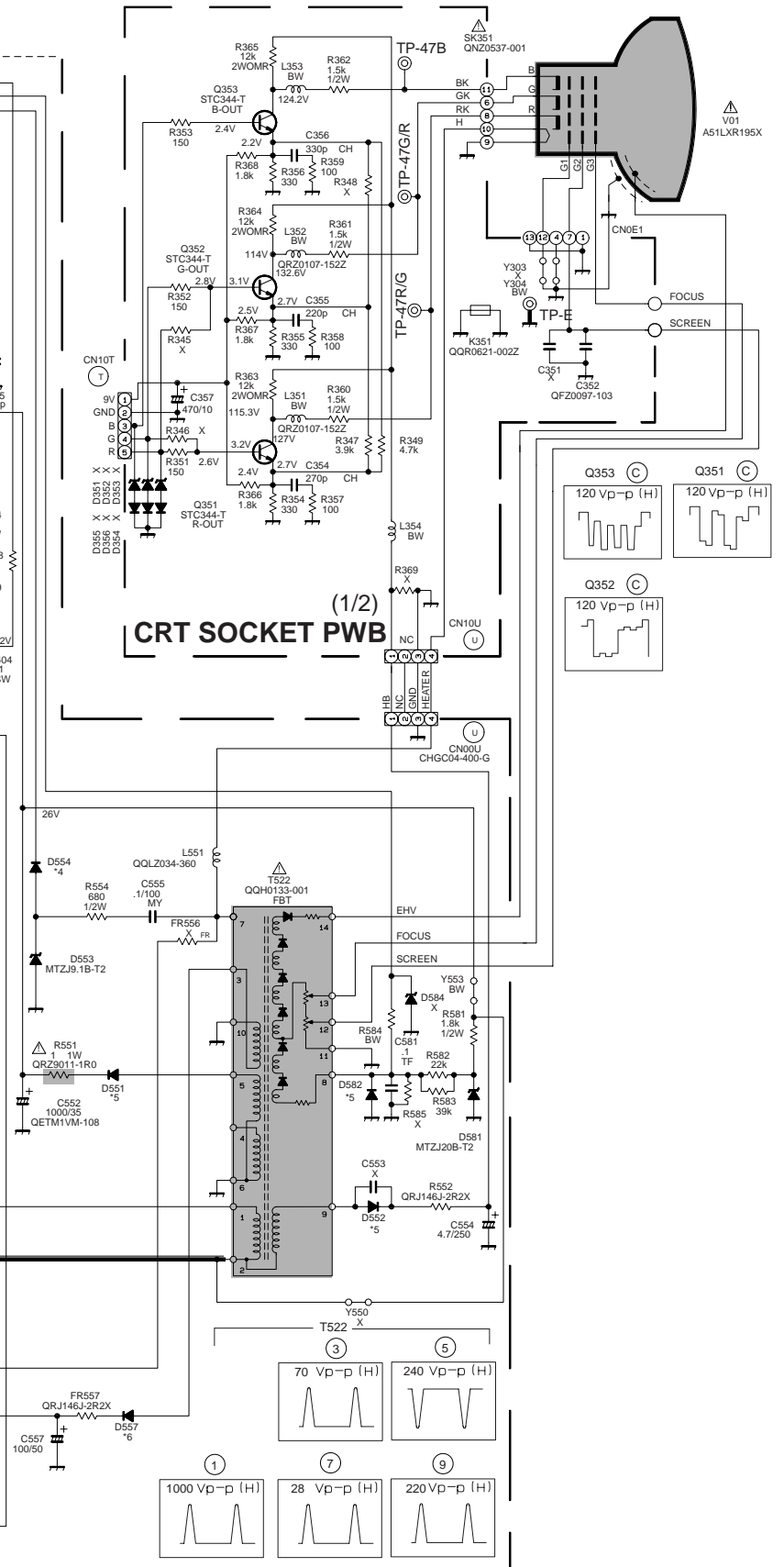
NOTE
*1: 2SD601A/QR-X
*2: 2SB709A/QR-X
*3: UN212-X
*4: MA111-X
*5: MTZJ8.1B-T2
*6: MTZJ8.8C-T2
*7: MTZJ12C-T2
*8: UN212-X
*9: QOR0621-002Z
*10: 2SC5083L-PI-T

DIFFERENCE LIST(PARTS)

	21LMT3	21LTR3
SF102	SCG-1316A-H2 QAX0731-001	SCG-1414A-H2 QAX0666-002
CF161	QAX0642-001Z	X
Q103	*3	X
Q161	*1	X
D102	MA859-T2	BW
Y160	BW	X
R112	NRSA63J-220X	NRSA63J-100X
R114	NRSA63J-472X	X
R115	NRSA63J-222X	X
R117	NRSA63J-060X	X
R118	NRSA63J-222X	X
R161	NRSA63J-102X	X
R162	NRSA63J-122X	X
R163	NRSA63J-222X	X
R164	NRSA63J-221X	X
R165	NRSA63J-220X	X
R166	NRSA63J-821X	X
C109	NCB31HK-472X	X
C161	NCB31HK-103X	X
C164	NCB31HK-103X	X
C165	NCB31HK-103X	X
C166	NCB31HK-104X	X



MAIN PWB (2/2)
SCG-1316A-H2
 (AV-21LMT3)
SCG-1414A-H2
 (AV-21LTR3)



MAIN PWB CIRCUIT DIAGRAMS (1/2) [AV-21LT3, AV-21LT3/AU, AV-21LMG3, AV-21LMG3/A, AV-2105EE]

MAIN PWB (1/2)

SCG-1405A-H2
(AV-21LT3)

SCG-1415A-H2
(AV-2105EE)

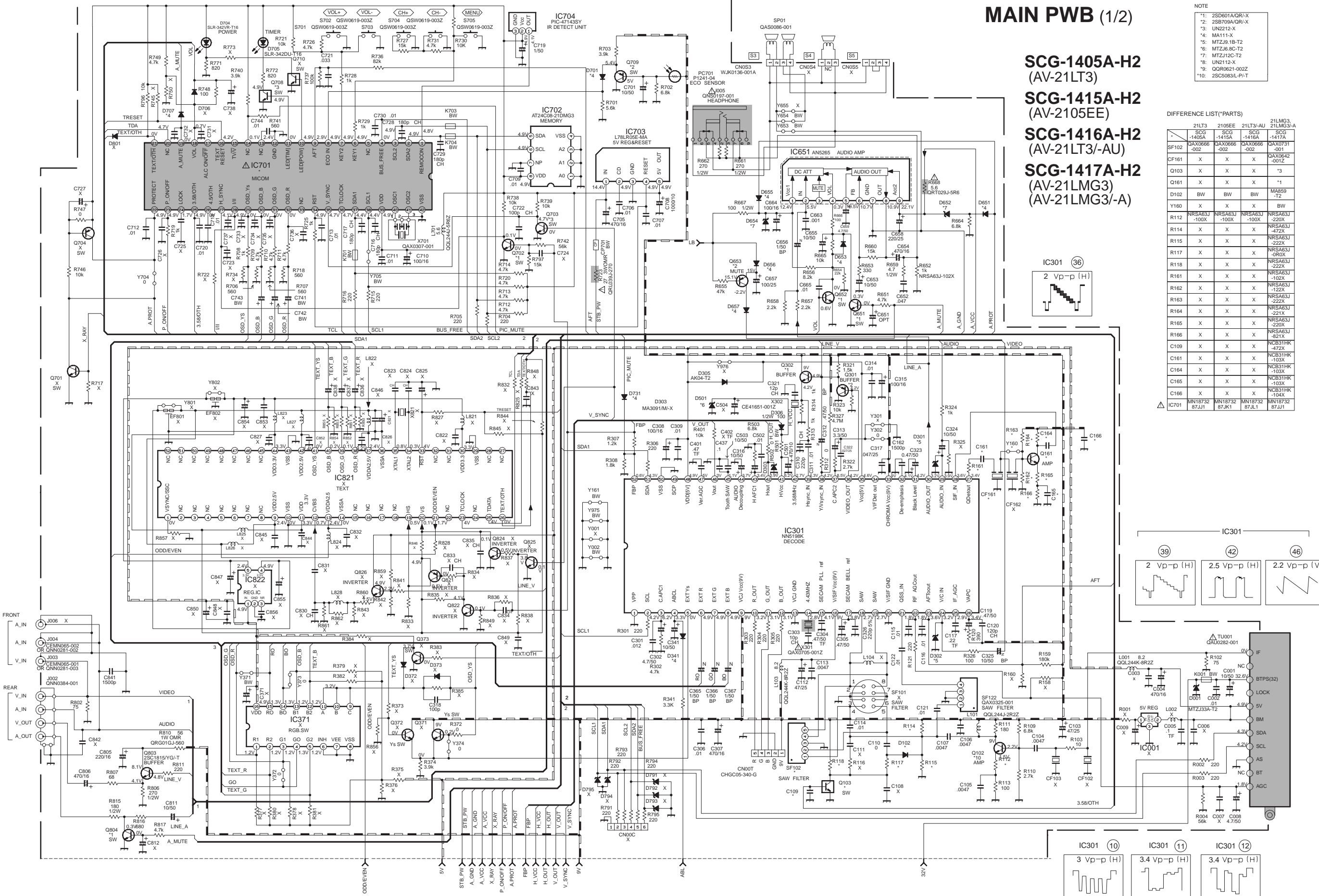
SCG-1416A-H2
(AV-21LT3/AU)

SCG-1417A-H2
(AV-21LMG3)
(AV-21LMG3/A)

- NOTE
- *1: 2SD601AQR/-X
 - *2: 2SB709AQR/-X
 - *3: UN212-X
 - *4: MA111-X
 - *5: MTZJ6-1B-T2
 - *6: MTZJ6-8C-T2
 - *7: MTZJ12C-T2
 - *8: UN212-X
 - *9: QOR0621-002Z
 - *10: 2SC5083L-P/-T

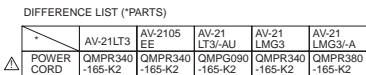
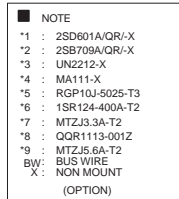
DIFFERENCE LIST(*PARTS)

	21LT3	2105EE	21LT3/AU	21LMG3
SF102	SCG-1405A -002	SCG-1415A -002	SCG-1416A -002	SCG-1417A -001
CF161	X	X	X	QAX0642 -001Z
Q103	X	X	X	*3
Q161	X	X	X	*1
D102	BW	BW	BW	MA859 T2
V160	X	X	X	BW
R112	NRSA63J -100X	NRSA63J -100X	NRSA63J -100X	NRSA63J -220X
R114	X	X	X	NRSA63J -472X
R115	X	X	X	NRSA63J -222X
R117	X	X	X	NRSA63J -0R0X
R118	X	X	X	NRSA63J -222X
R161	X	X	X	NRSA63J -102X
R162	X	X	X	NRSA63J -122X
R163	X	X	X	NRSA63J -222X
R164	X	X	X	NRSA63J -221X
R165	X	X	X	NRSA63J -220X
R166	X	X	X	NRSA63J -821X
C109	X	X	X	NCB31HK -472X
C161	X	X	X	NCB31HK -103X
C164	X	X	X	NCB31HK -103X
C165	X	X	X	NCB31HK -103X
C166	X	X	X	NCB31HK -104X
IC701	MM18732 87J1	MM18732 87J1	MM18732 87J1	MM18732 87J1



MAIN PWB (2/2)

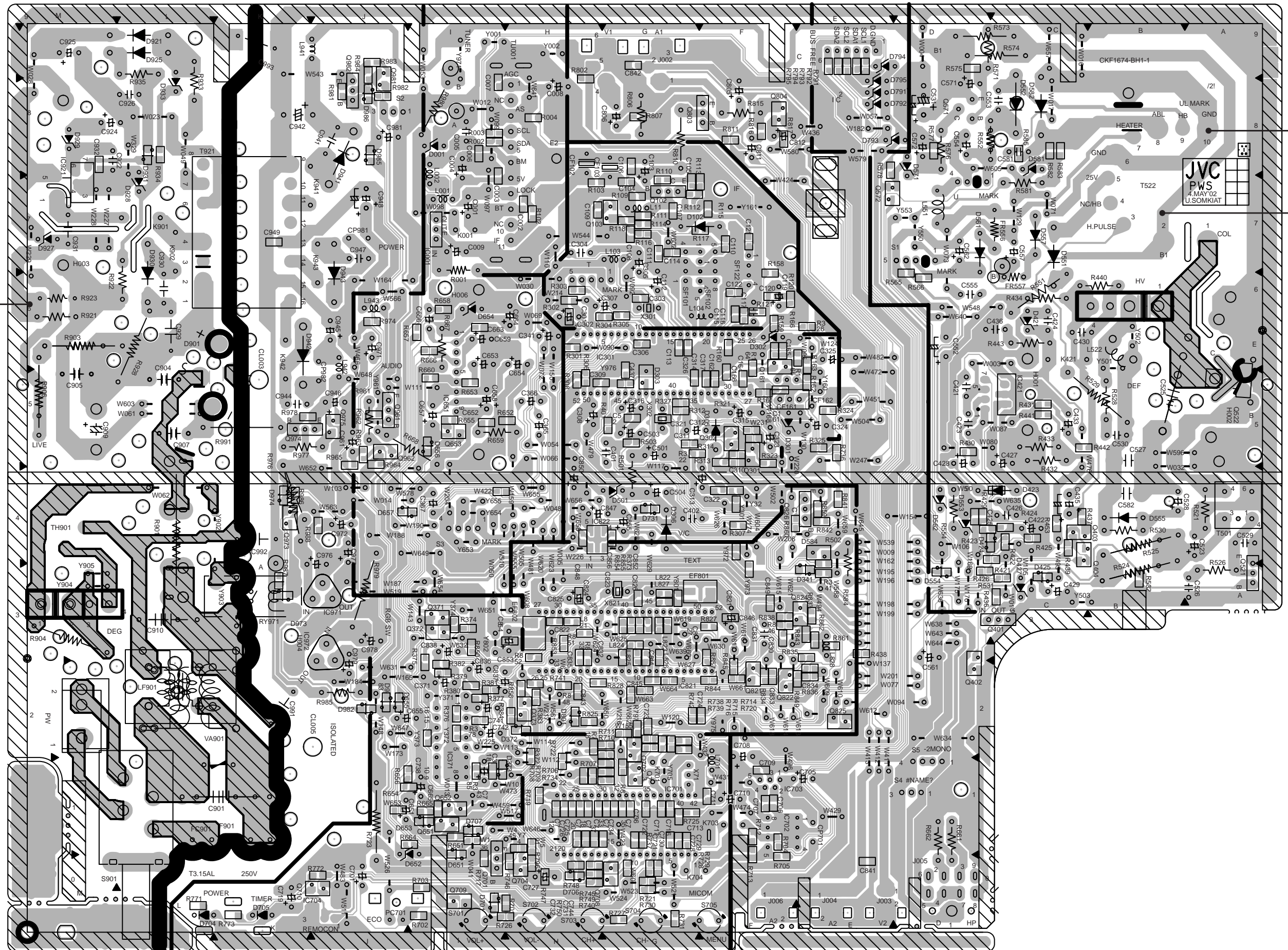
SCG-1417A-H2
(AV-21LMG3)
(AV-21LMG3/-A)



PATTERN DIAGRAMS MAIN PWB PATTERN

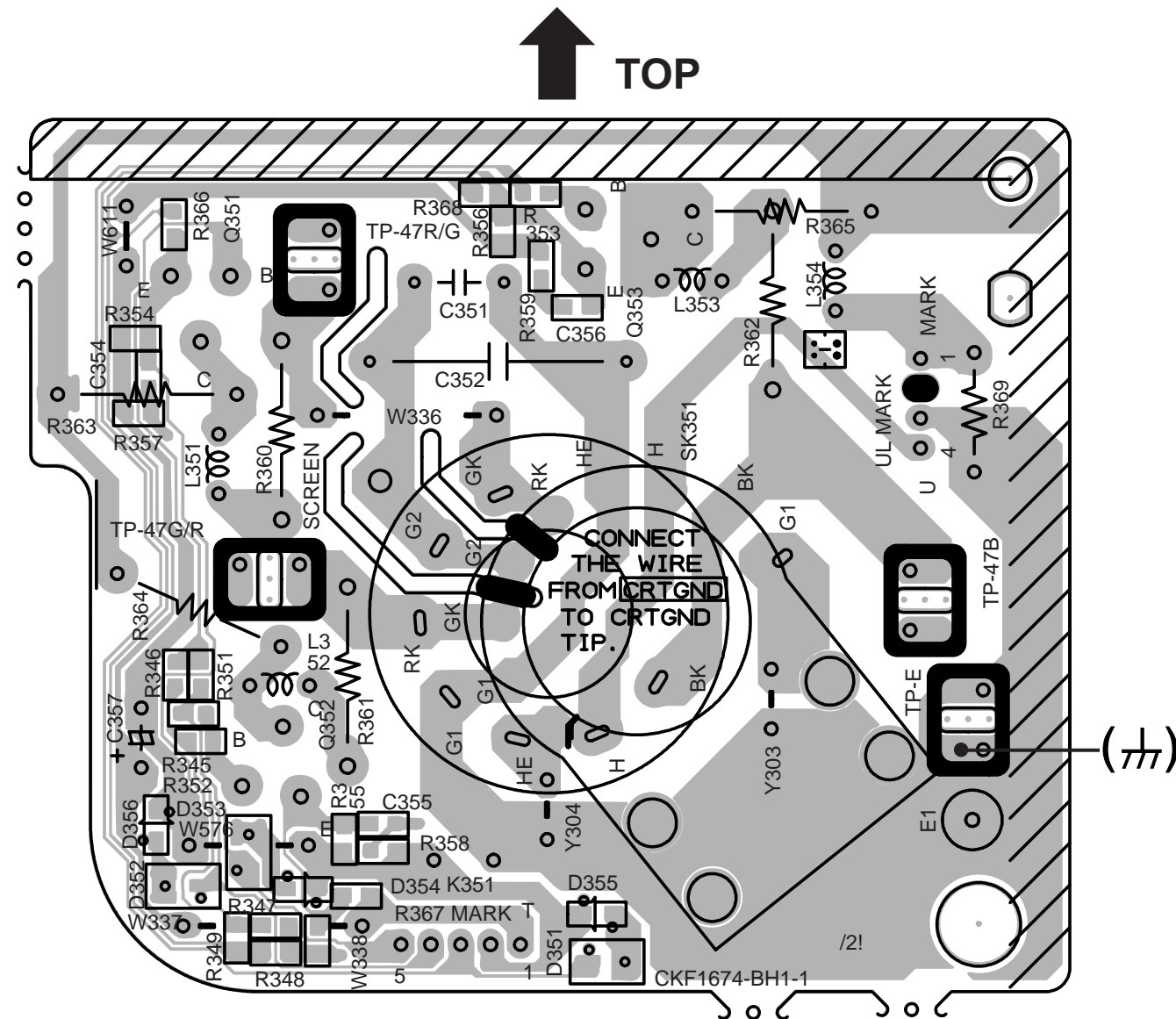
FRONT

(T)



TP-E
(T)

TP-91
(B1)





VICTOR COMPANY OF JAPAN, LIMITED

HOME AV NETWORK BUSINESS UNIT. 12, 3-chome, Moriya-cho, Kanagawa-ku, Yokohama, Kanagawa-prefecture, 221-8528, Japan